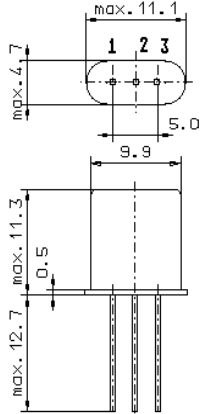


Specification for monolithic crystal filter:

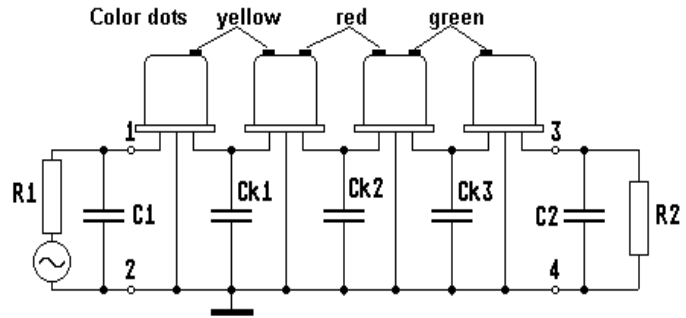
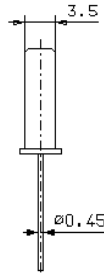
MQF 10.7-0630/08

1. General

1.1. Package: 4 x GH 3 (each filter consists of 4 pcs. of matched duals)



GH3



- | | |
|-----------------------------------|------------------|
| 1.2. Type name: | MQF 10.7-0630/08 |
| 1.3. Number of poles: | 8 |
| 1.4. Operating temperature range: | -40°C to +85°C |
| 1.5. Storage temperature range: | -55°C to +105°C |

2. Electric values

- | | |
|---|---|
| 2.1. Nominal centre frequency f_0 : | 10.7 MHz |
| 2.2. Pass band | |
| 2.2.1. Bandwidth between 6 dB - frequencies: | $\geq f_0 \pm 3.15$ kHz |
| 2.2.2. Ripple: | ≤ 2.0 dB at $f_0 \pm 2.5$ kHz |
| 2.2.3. Insertion loss:
(measured on smallest attenuation in pass band) | ≤ 4.0 dB |
| 2.2.4. Group delay distortion: | < 160 μ s at $f_0 \pm 2.5$ kHz |
| 2.3. Stop band | |
| 2.3.1. $f_0 \pm 7.0$ kHz | ≥ 60 dB |
| 2.3.2. $f_0 \pm 8.33$ kHz | ≥ 75 dB |
| 2.3.3. $f_0 \pm 25$ kHz Alternate attenuation: | ≥ 90 dB (except spurious) |
| 2.4. Terminating impedance (input and output): | $2100 \Omega // 2.5$ pF |
| 2.4.1. Coupling capacitance Ck1,Ck3: | 9.2 pF |
| Ck2: | 10.4 pF |
| 3. Marking: | manufacturer, date code
MQF 10.7-0630/08 |
| 4. Environment conditions: | Corresponding to Vectron standard CF001 |

Edited by: _____ date: _____ name: _____